



# EZRAMAN-M Laboratory Series

LABORATORY RAMAN ANALYZERS

The new EZRaman-M Laboratory Series of Raman Analyzers enable greater simplicity for solid and liquid material identification and testing.

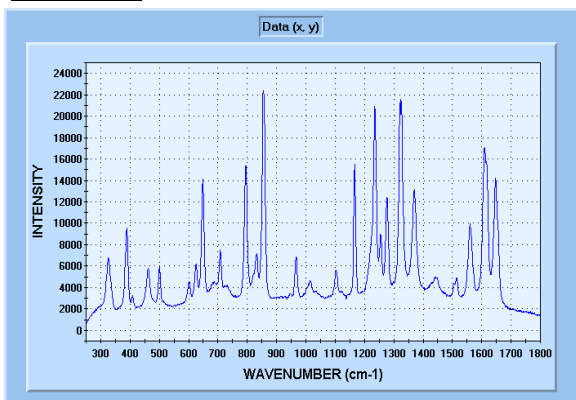
The laboratory EZRaman-M systems feature a frequency-stabilized diode laser, a high Rayleigh rejection fiber optics probe, and a miniature high resolution spectrometer achieving up to  $\sim 4.5\text{cm}^{-1}$  standard average optical resolution, depending on spectral range. The user-friendly RamanReader spectra management software simplifies spectra identification and chemical reaction monitoring. The EZRaman-M laboratory systems are powerful, compact, robust, and affordable field portable Raman analyzers. They are an ideal choice for any academic, research, industrial, and all other applications requiring a high performance, low-cost, Raman Analyzer System.



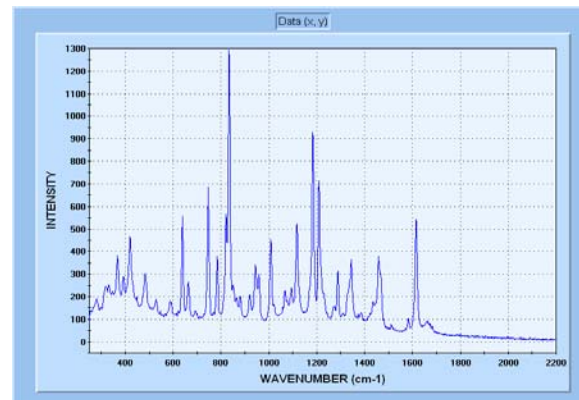
## Sample Spectra

### A-Model

#### TYLENOL

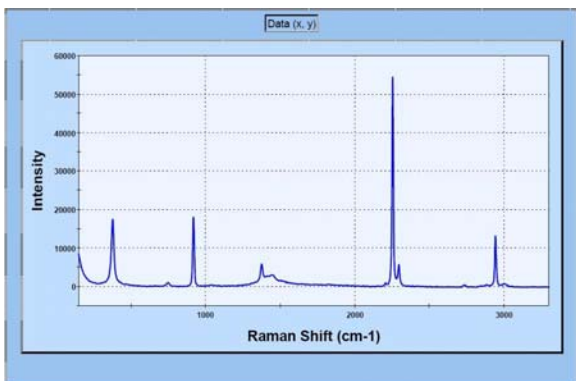


### IBUPROFEN

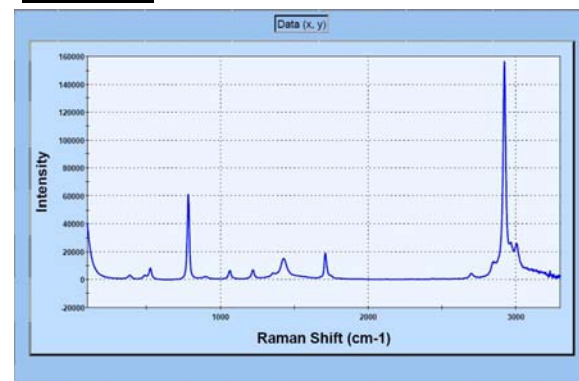


### B-Model

#### ACETONITRILE



### ACETONE





LABORATORY RAMAN ANALYZERS

EZRaman-M Series

SPECIFICATIONS

EXCITATION SOURCE	785 nm Frequency Stabilized, Narrow Linewidth Diode Laser Laser Power: ~300-400mW Optical Power adjustable from 0 to full power Laser shutter control Optional Available Wavelength: 532nm
FIBER-OPTIC PROBE	HRP-8 High throughput fiber optics probe Rayleigh Rejection: O.D. > 8 at Laser Wavelength Working Distance: ~7.5 mm (Standard), 3mm or 10 mm Optional Crushproof Stainless Steel Jacket
SPECTROGRAPH	<p><i>Option A2:</i> Spectral Coverage: 250 cm<sup>-1</sup> to 2,350 cm<sup>-1</sup> Standard average optical resolution: ~4.5 cm<sup>-1</sup> Nominal resolution: 1 cm<sup>-1</sup>/pixel</p> <p><i>Option A1:</i> Spectral Coverage: ~100 cm<sup>-1</sup> to 2,200 cm<sup>-1</sup> Standard average optical resolution: ~4.5 cm<sup>-1</sup> Nominal resolution: 1 cm<sup>-1</sup>/pixel</p> <p><i>Option B:</i> Spectral Coverage: ~100 cm<sup>-1</sup> to 3,300 cm<sup>-1</sup> Standard average optical resolution: ~6.5 cm<sup>-1</sup> Nominal resolution: 1.6 cm<sup>-1</sup>/pixel</p> <p>TEC regulated Linear CCD Array</p>
SYSTEM SOFTWARE	Data Acquisition and Spectra Management Software Data Files Can Be saved as .TXT, .SPC, .DAT, or .BMP Formats Direct Export/Link to GRAMS or Excel for Post Processing and Modeling Time Chart with Stacked, Overlaid, and Single Spectrum Display Modes Time Trend and Ratio Calculate in Time Chart Mode Auto Base Line, Manual Base Line
SYSTEM OPERATING TEMPERATURE/PROTECTION	Operation temperature 10°C - 40°C, With Thermal Shutdown Protection
POWER REQUIREMENTS	DC power supply (work both for 110/220V)
PACKAGING DIMESIONS (L x W x H)"	4" x 6.25" x 8.25"
SYSTEM WEIGHT	~6 Lbs.
ACCESSORIES (Optional)	Pre-aligned Lens Tube Sample Holder Integrated UMPC
SYSTEM WARRANTY	One Year for Labor and parts

Appropriate safety guidelines should be followed when operating this instrument. Complies with 21 CFR 1040.10 and 1040.11

Specifications are subject to change without notice.

