

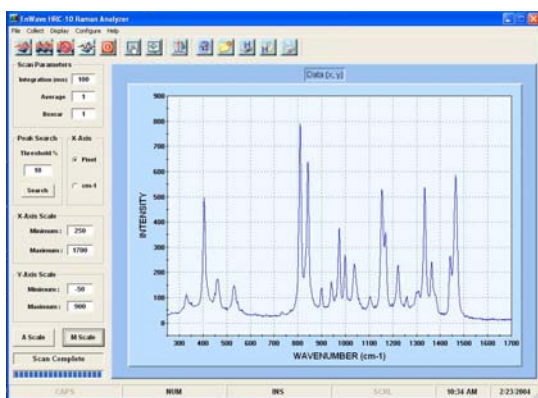


Enwave Optronics, Inc.

EZRaman-L *PORTABLE LABORATORY RAMAN ANALYZER*

The Laboratory portable EZRaman-L is the work-horse Raman instrument for routine condensed material measurements and analyses. The fully integrated EZ-Raman Analyzer is the best **performances/Cost** Raman System in it's class.

Featuring Enwave designed proprietary frequency-stabilized diode laser and high Rayleigh rejection fiber optic probe, miniature high resolution spectrometer, achieving 4 cm^{-1} resolution, and efficient and user friendly Enwave software; this compact, robust, and affordable Portable laboratory Raman Analyzer is a must have for any academic, research, industrial, and all other laboratory application requiring a high performance and low cost Raman System.



SYSTEM FEATURES

- **Fully Integrated Raman System**
- **NIR / Narrow-Linewidth Frequency-Stabilized Laser**
- **High Performance Probe (O.D. > 8)**
- **High Resolution Spectrograph (4 cm^{-1})**
- **User Friendly Software Control**
- **Compact Portable Design**

PORTABLE LABORATORY RAMAN ANALYZER *EZRaman-L***SPECIFICATIONS**

| | |
|-------------------------------------|---|
| EXCITATION SOURCE | 785 nm Frequency Stabilized, Narrow Linewidth Diode Laser Laser Power: 300-400 mW (Higher Output Power Available Upon Request) ASE Reduced Design (532nm, 670 nm optional) |
| FIBER-OPTIC PROBE | Permanently-Aligned Two Single Fiber Combination 100 μ m Excitation Fiber, 200 μ m Collection Fiber (0.22 NA) Working Distance: 7 mm (Standard), 3mm and 10 mm (Optional) Rayleigh Rejection: O.D. > 8 at Laser Wavelength |
| SPECTROGRAPH | f/4.0, Symmetrical Crossed Czerny - Turner Design TEC Regulated Linear CCD Array Resolution 4 cm^{-1} , Spectral Coverage ~ 100 cm^{-1} to 2350 cm^{-1} 16 Bit Digitization USB Interface |
| SYSTEM SOFTWARE | Data Acquisition and Spectra Management Software Data Files Can Be saved as TXT, SPC, XLS, DAT, or BMP Formats Direct Export/Link to Grams or Excel for Post Processing and Modeling Spectral search and spectral database management using Spectral ID Time Chart and Time Trend Function for Chemical Dynamic Monitoring Auto Base Line, Manual Base Line and (Optional) Y Calibration Mode |
| SYSTEM OPERATING TEMPERATURE | 10°C - 40°C (With Thermal Shutdown Protection) |
| POWER REQUIREMENTS | 5 Amp at 5 VDC |
| DIMESIONS (L x W x H)" | 12.8" x 8.3" x 4.9" |
| SYSTEM WARRANTY | One Year |



Appropriate safety guidelines should be followed when operating this instrument.
Complies with 21 CFR 1040.10 and 1040.11

Specifications are subject to change without notice.